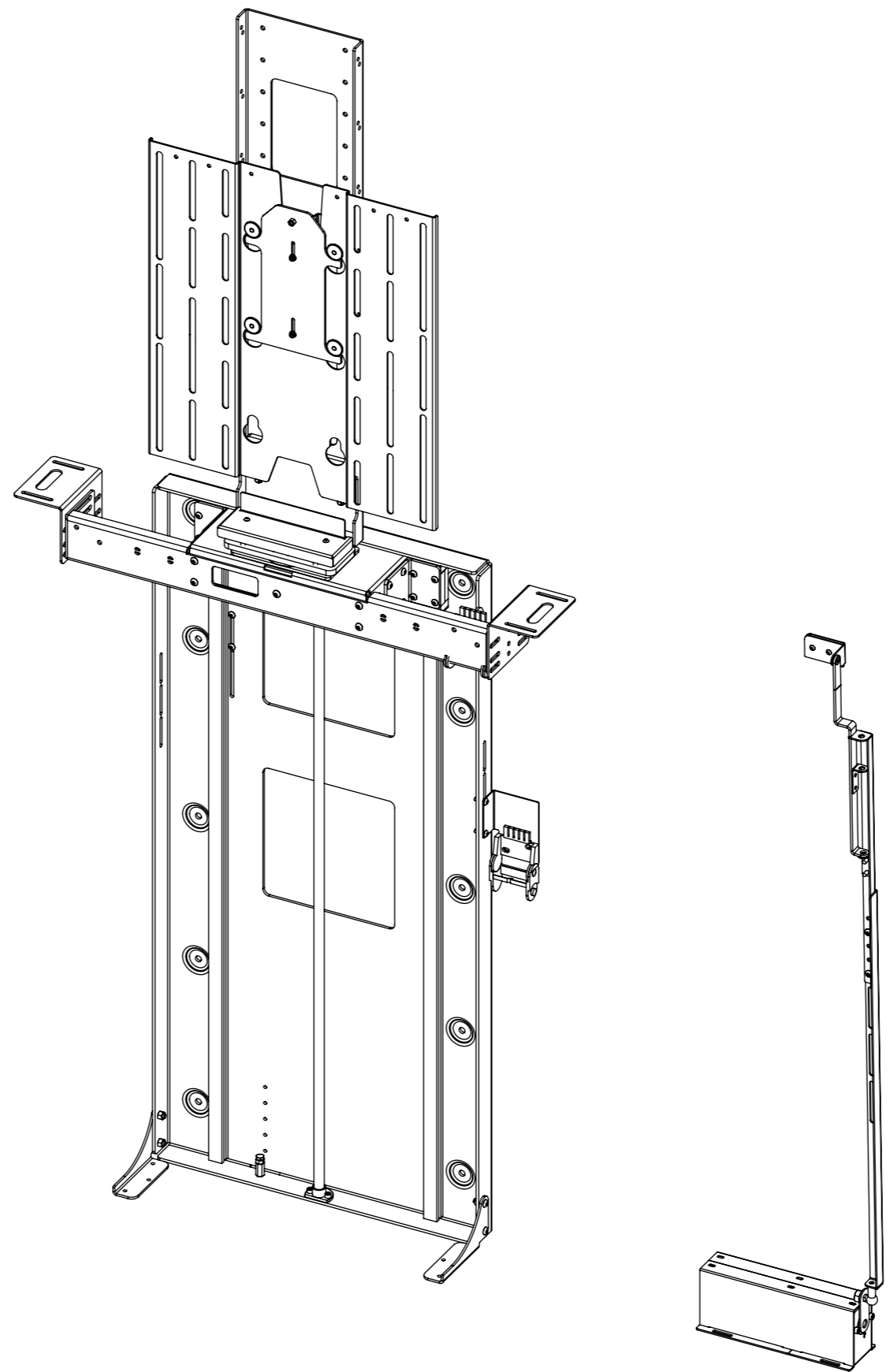


LSM-EFA-7

LIFT SYSTEM MEDIUM WITH ELECTRIC FLAP



future automation



LSM-EFA-7

LIFT SYSTEM MEDIUM WITH ELECTRIC FLAP



SPECIFICATION	MEASUREMENTS
Maximum Screen Height	905mm (35 5/8")
Maximum Lifting Capacity	50Kg (110lb)
Maximum Lifting Capacity (Marine)	30Kg (66lb)
Internal Cabinet Height	1060mm (41 3/4")
Decibel Rating	52 dB
Packaging Dimensions	1250 x 850 x 330mm (49 3/16 x 33 7/16 x 13")
Shipping Weight	37Kg (82lb)
Movement Type	Motorised
Power Supply Required	110V - 240V AC
Power Consumption	250 - 500W
Power Consumption Standby	3W
Mounting Patterns Supported	VESA 400, 300, 200 W x 400, 300, 200 H
Control Options	IR Remote, RS232, Contact Closure, RF Available
Product Options / Features	Specific B&O and Loewe mounts / adapters, Custom RAL paint finishes
Package Contents	Mechanism, IR remote control
Marine Suitable	Yes

LSM-EFA-7




LIFT SYSTEM MEDIUM WITH ELECTRIC FLAP

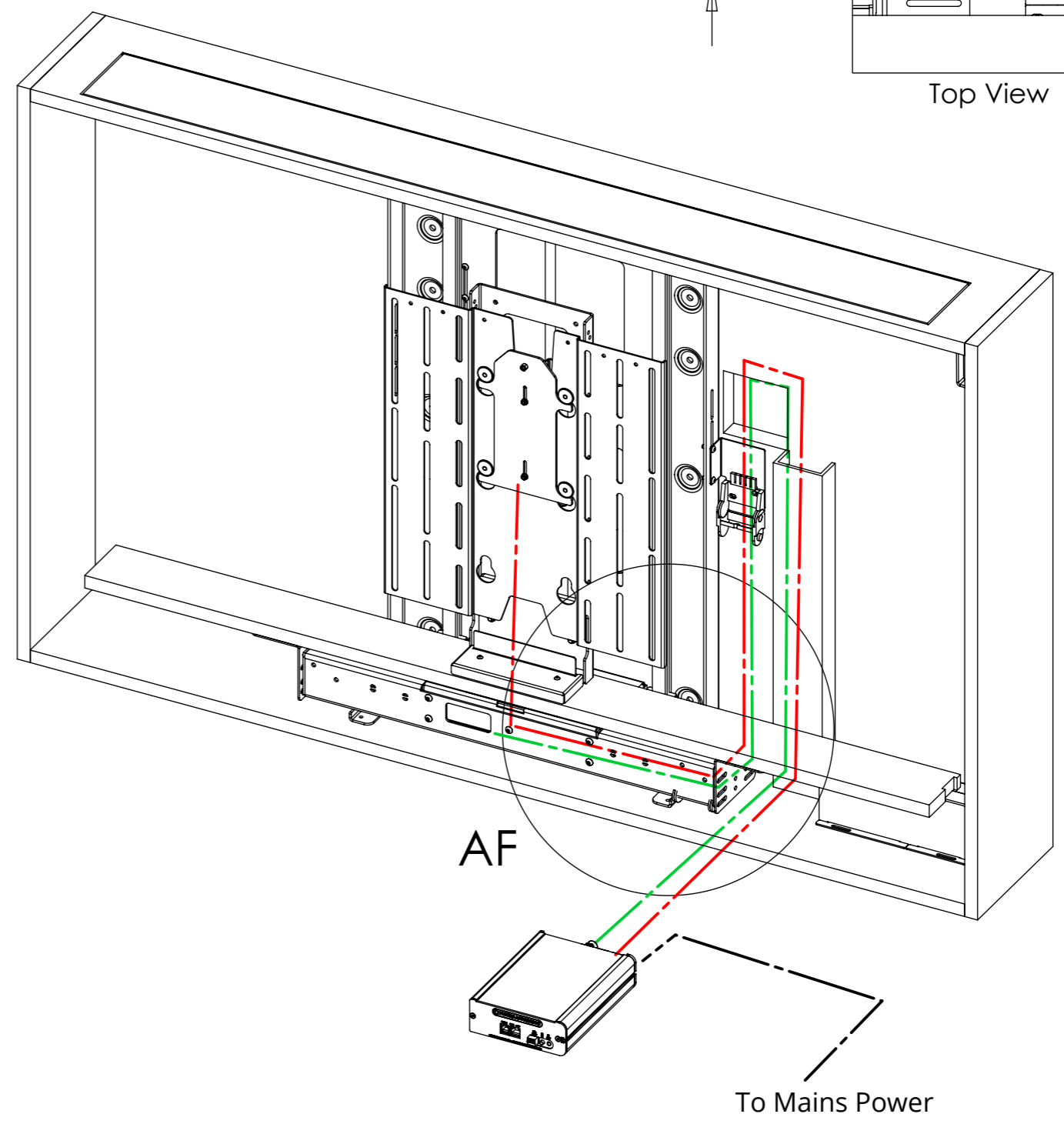
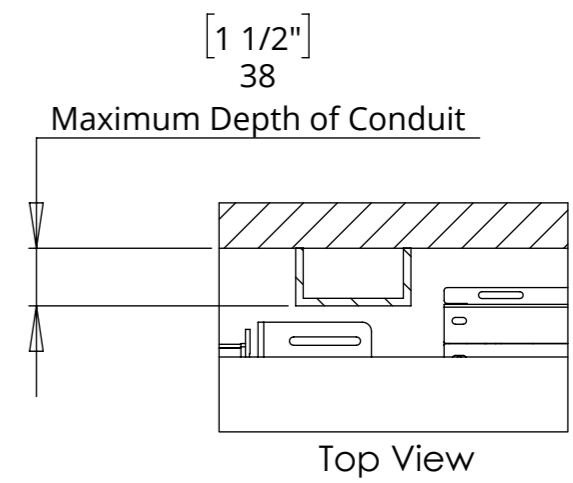
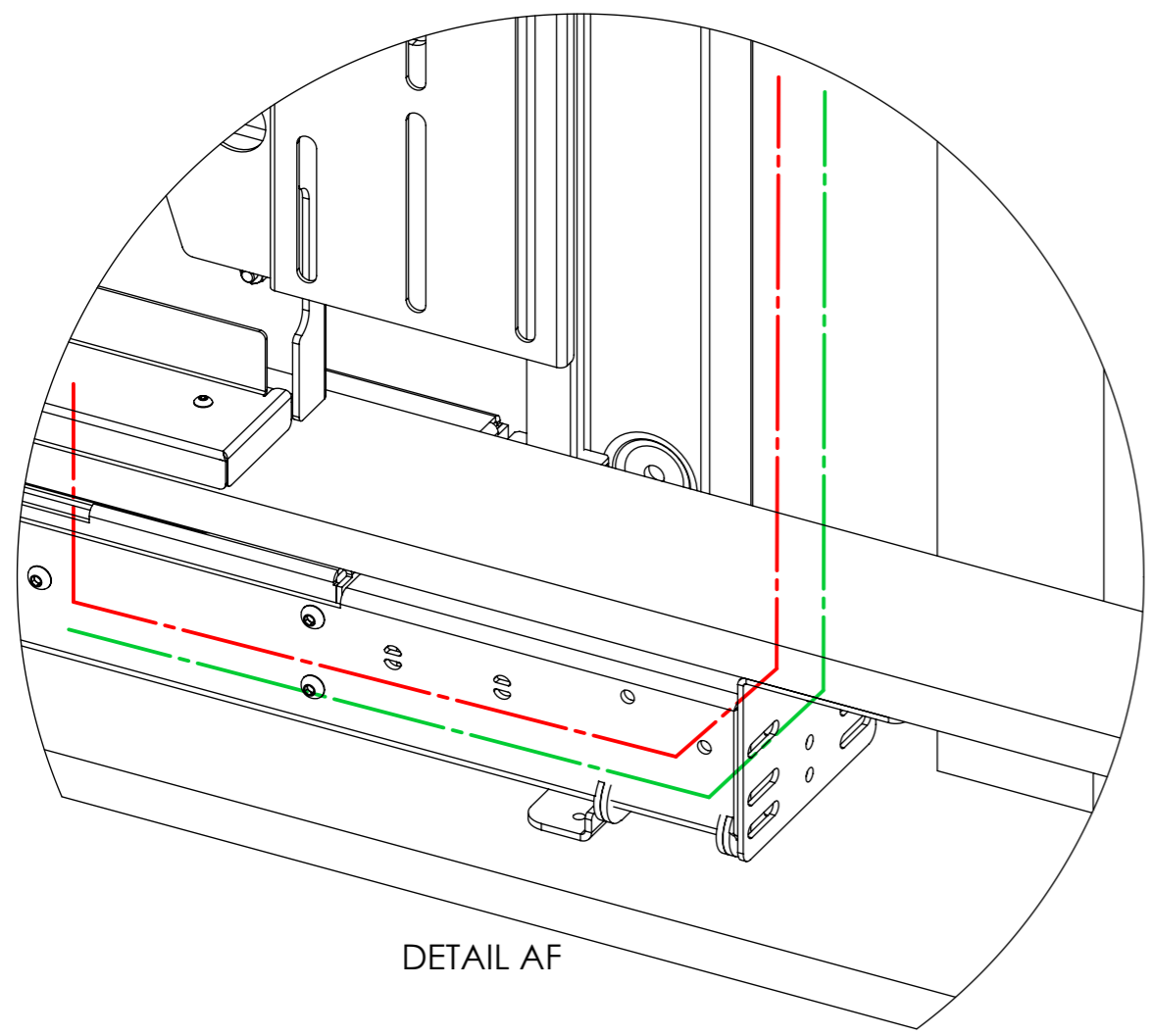


CABLE ROUTING

The LSM has an easily removable Mount Cover that cables from the screen can be routed underneath. Cables then travel through the centre of the Mount Boss and into the beam. Cables must be routed carefully to prevent any interference with the LSM beam as it operates.

Screen and Mechanism cables should be routed to a control box outside of the cabinet via an opening in the back of the cabinet or a conduit leading to the bottom.

-  SCREEN CABLES
-  MECHANISM CABLES
-  POWER CABLE



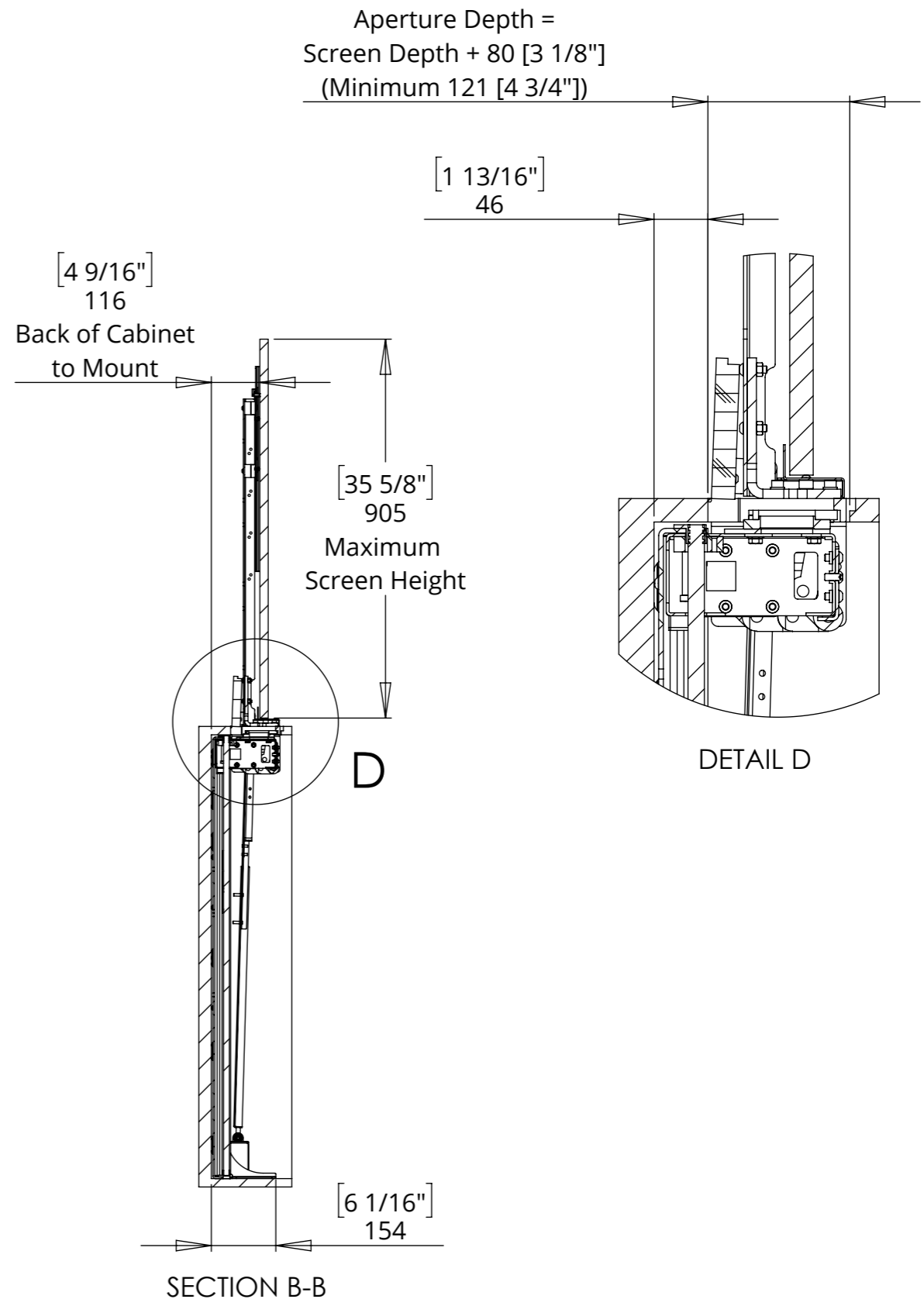
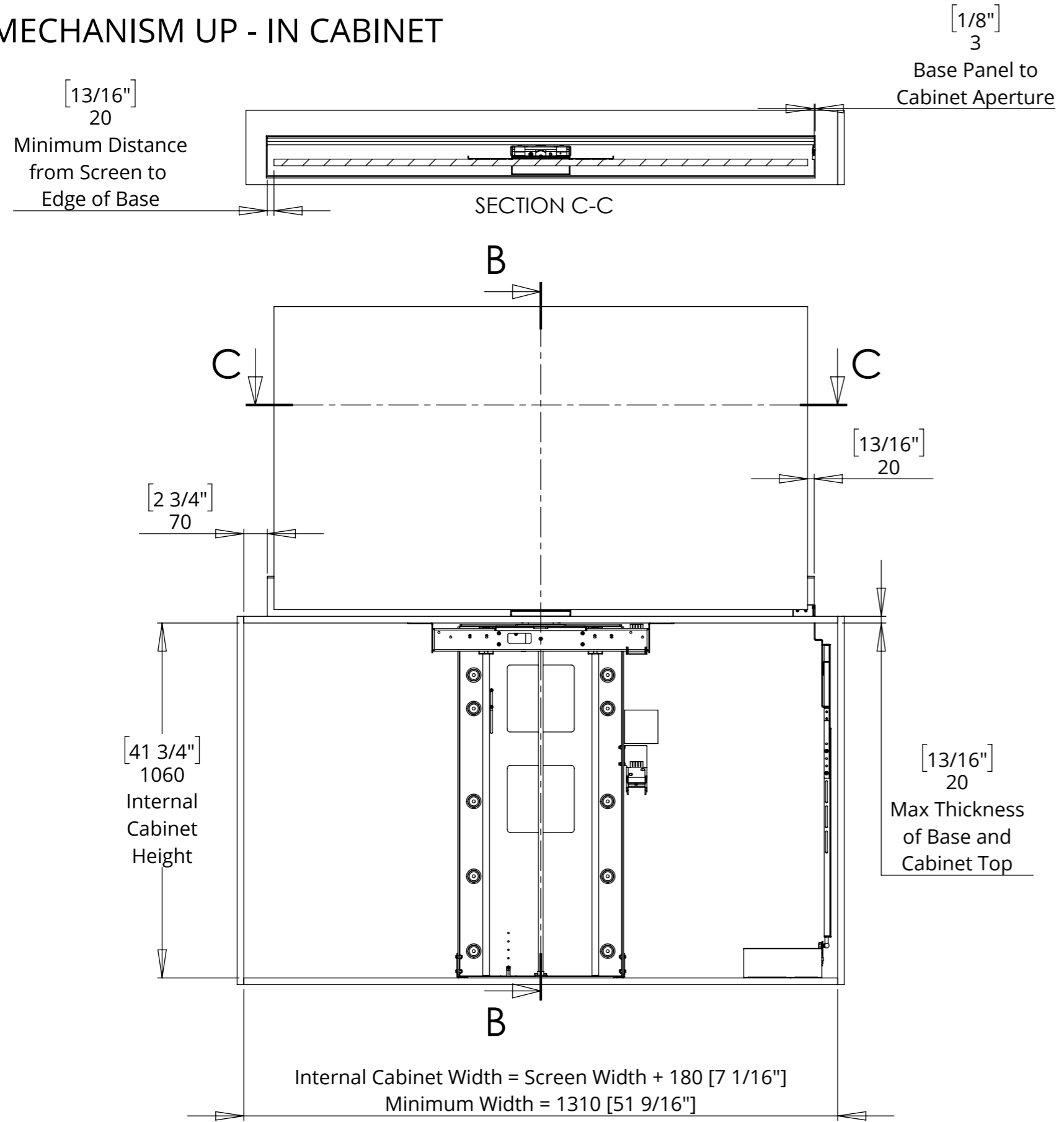
LSM-EFA-7

LIFT SYSTEM MEDIUM WITH ELECTRIC FLAP



future automation

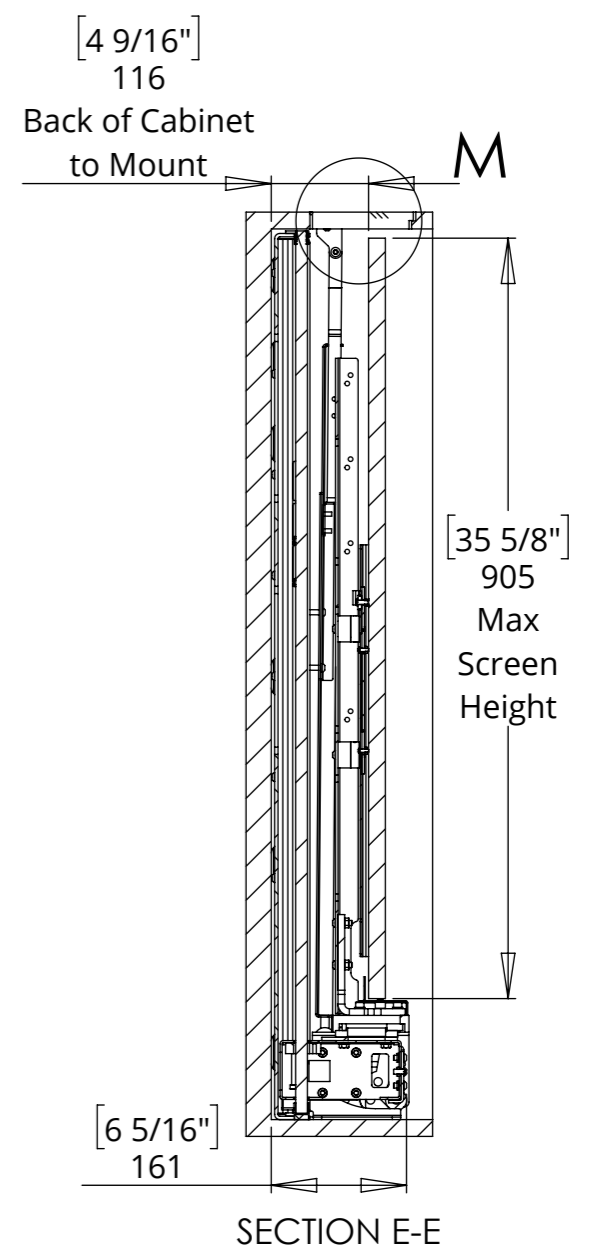
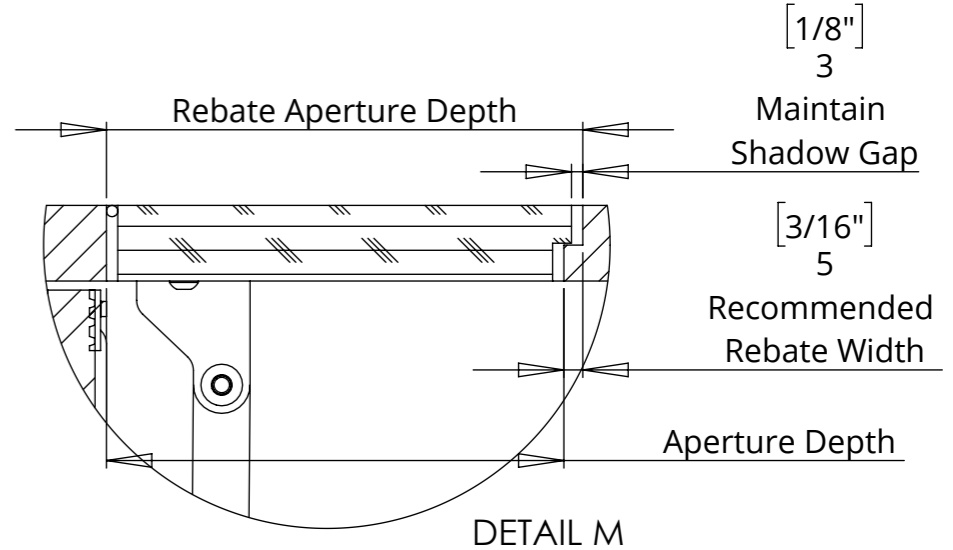
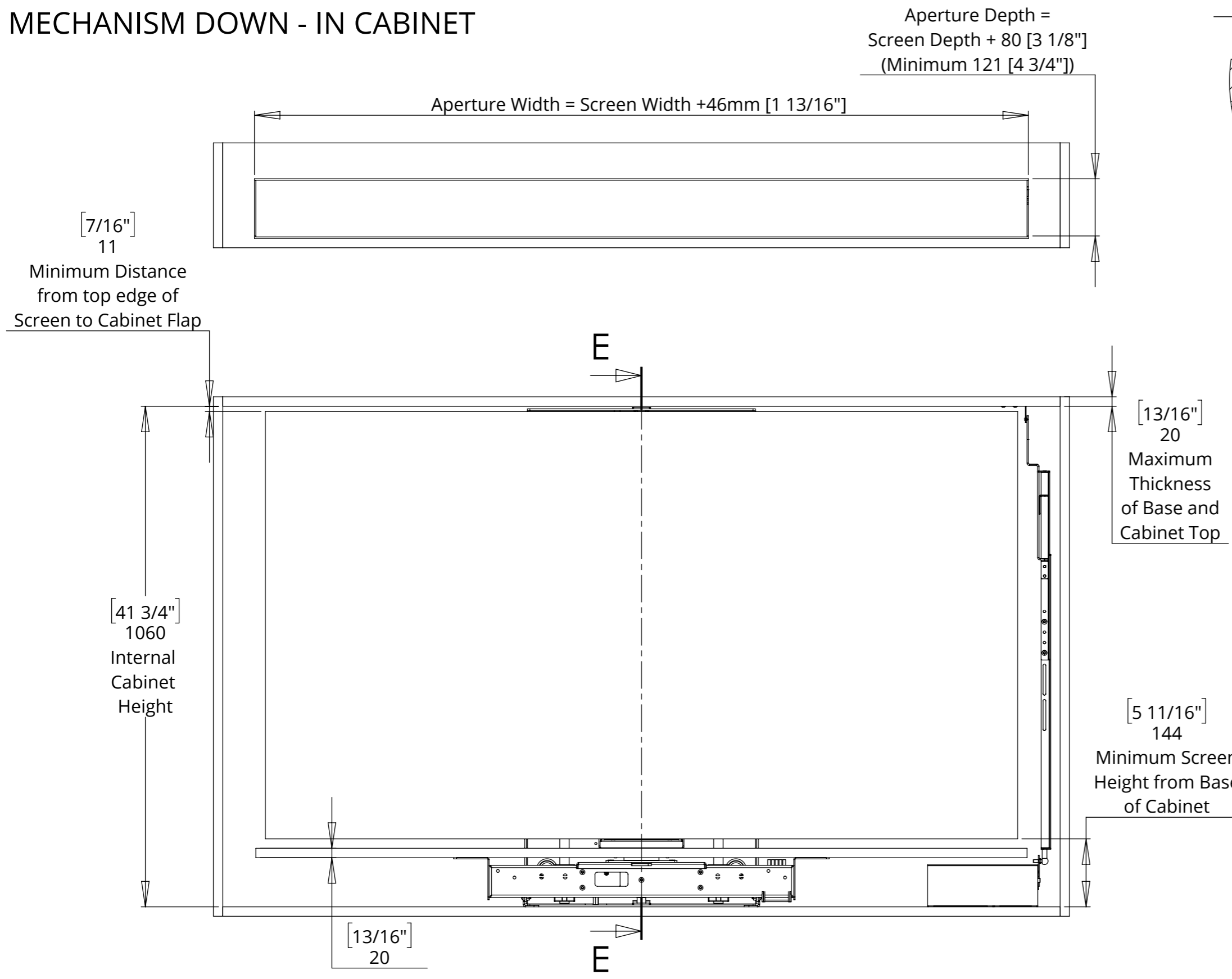
MECHANISM UP - IN CABINET



LSM-EFA-7

LIFT SYSTEM MEDIUM WITH ELECTRIC FLAP

MECHANISM DOWN - IN CABINET



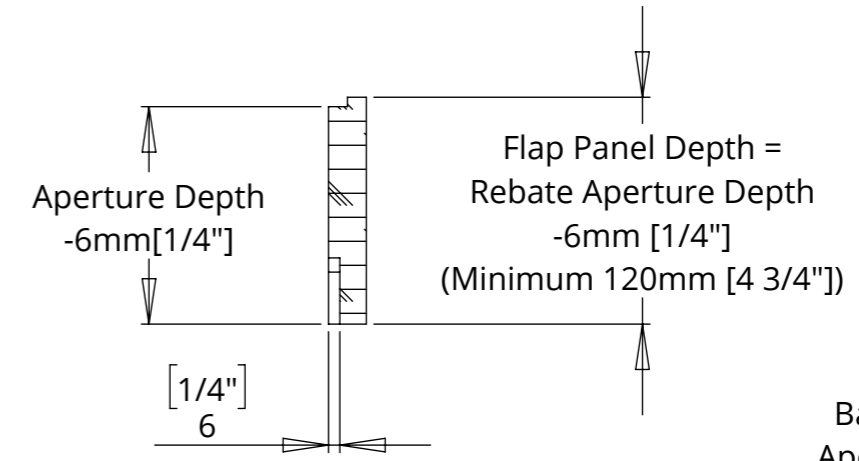
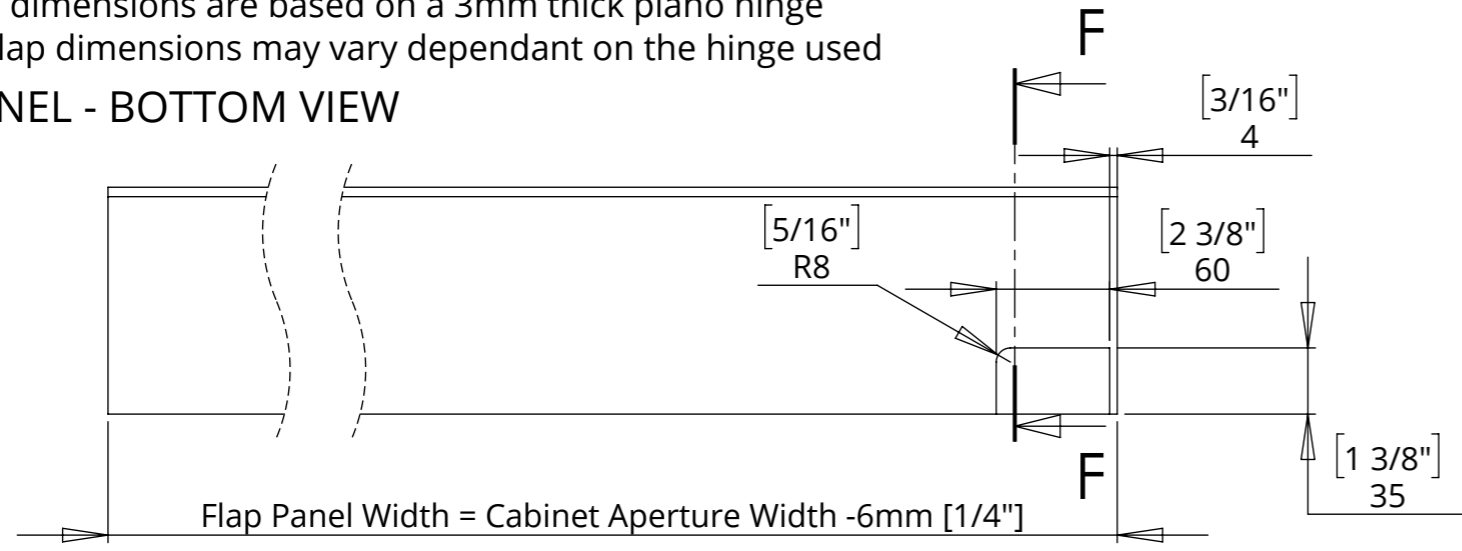
LSM-EFA-7

LIFT SYSTEM MEDIUM WITH ELECTRIC FLAP

BASE PANEL AND FLAP DETAILS

Flap depth dimensions are based on a 3mm thick piano hinge
 Required flap dimensions may vary dependant on the hinge used

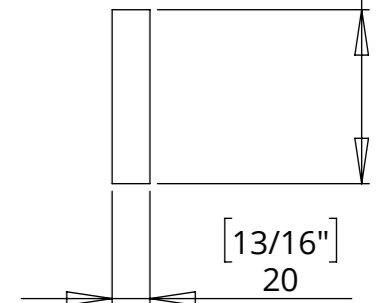
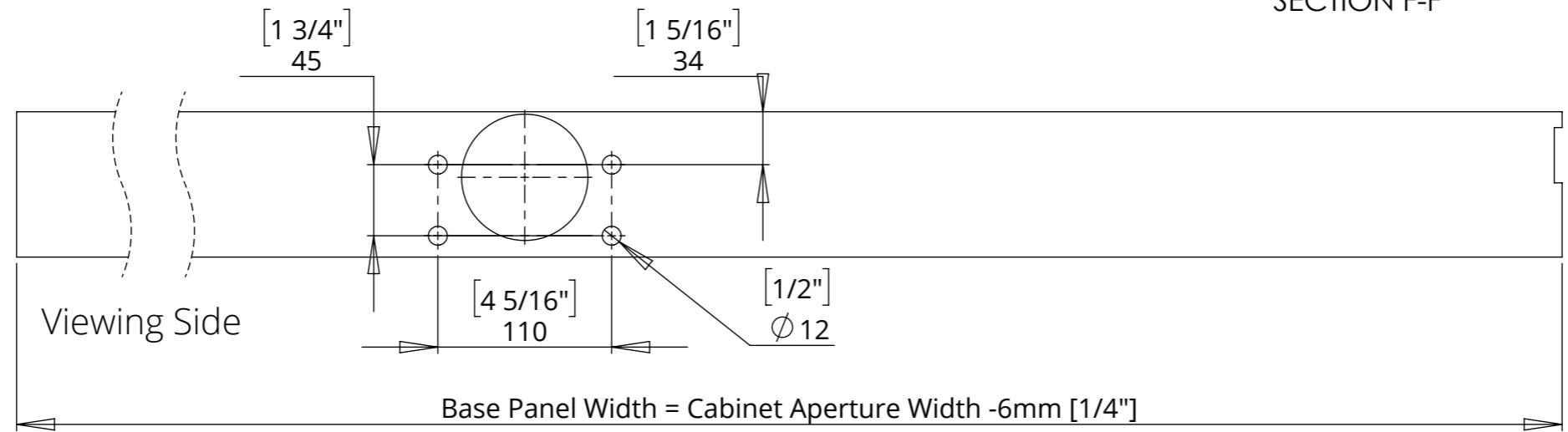
FLAP PANEL - BOTTOM VIEW



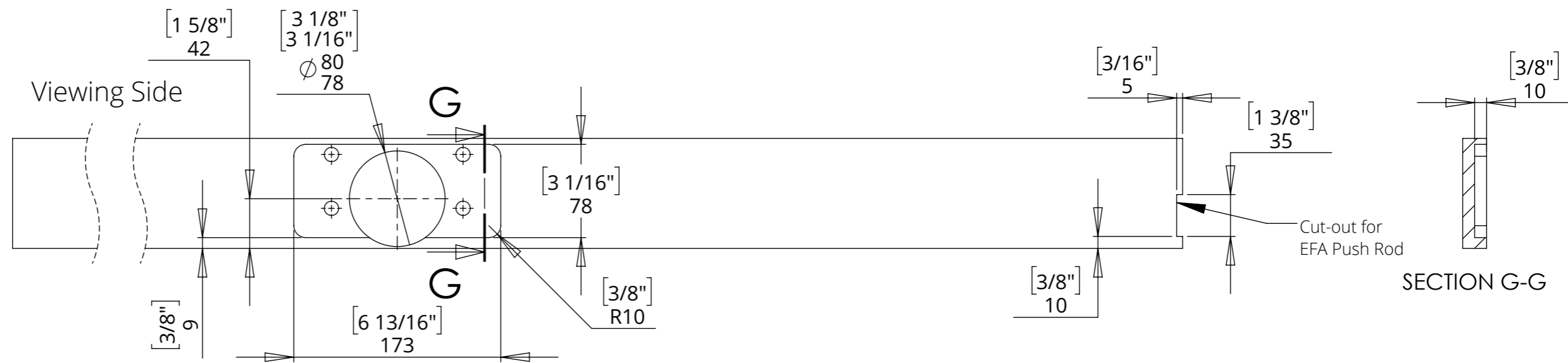
Base Depth = Aperture Depth - 29mm [1 1/8"] (Minimum 92mm [3 5/8"])

SECTION F-F

BASE PANEL - TOP VIEW



BASE PANEL - BOTTOM VIEW



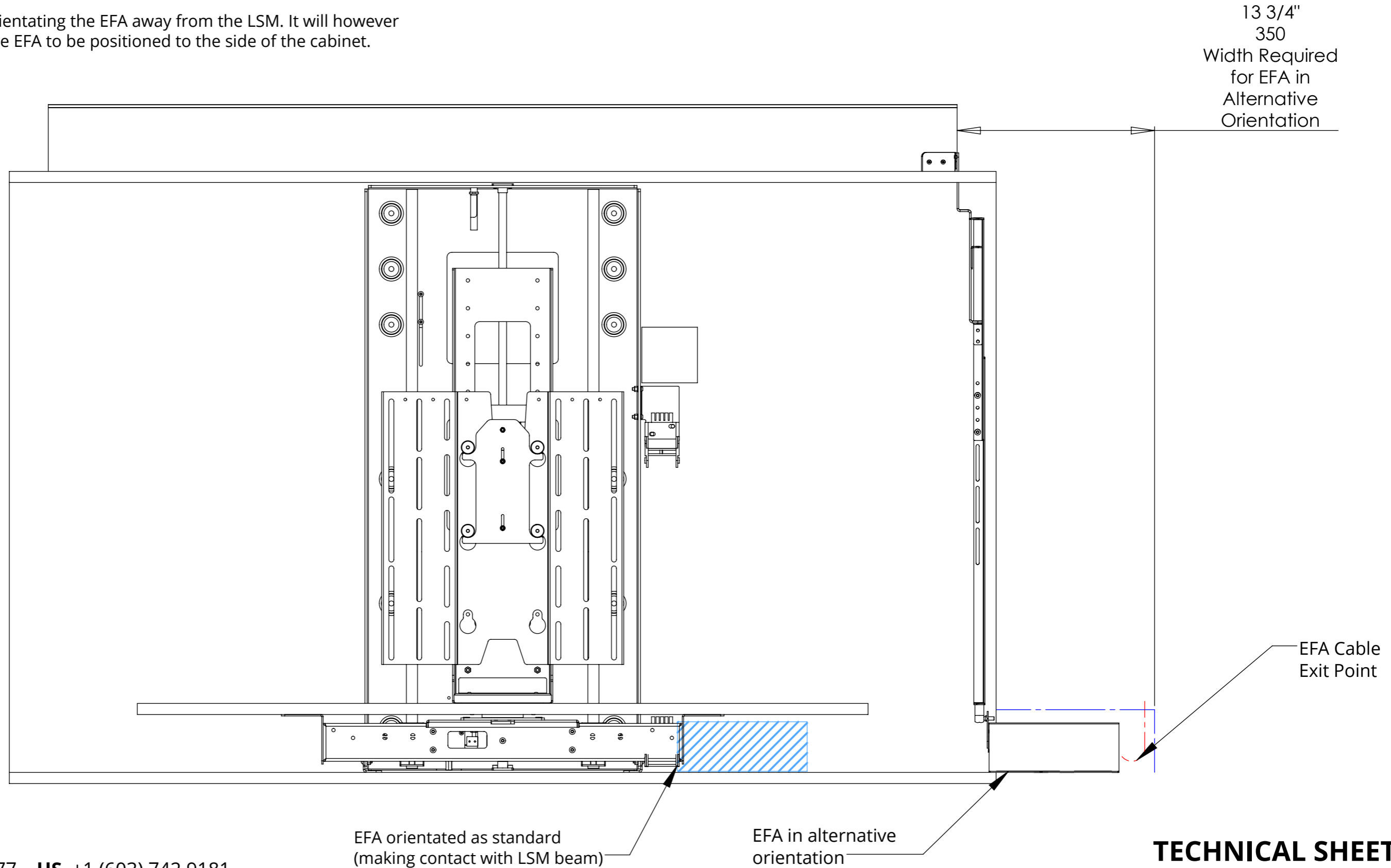
SECTION G-G

LSM-EFA-7

LIFT SYSTEM MEDIUM WITH ELECTRIC FLAP

POSITIONING THE EFA TO ACCOMMODATE SMALLER SCREENS

A Base Panel of less than 1170mm [46"] wide will cause the EFA to interfere with the LSM beam.
This can be avoided by orientating the EFA away from the LSM. It will however require more space for the EFA to be positioned to the side of the cabinet.



LSM-EFA-7

LIFT SYSTEM MEDIUM WITH ELECTRIC FLAP

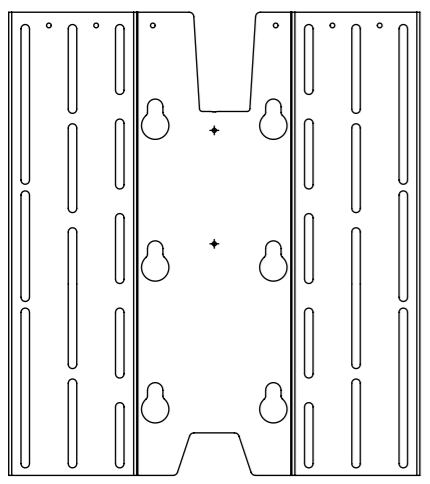


future automation

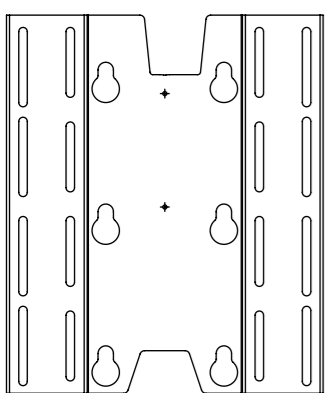
SCREEN MOUNT ADJUSTABILITY

A standard adjustable height VESA 400 mount is included. This is also compatible with VESA 300 and 200 mounting patterns

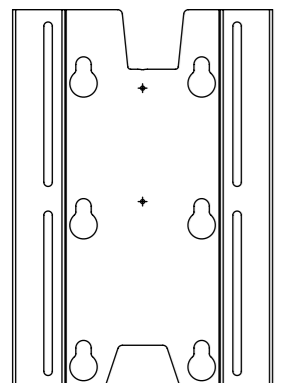
Separate VESA 300 and 200 mounts are available.



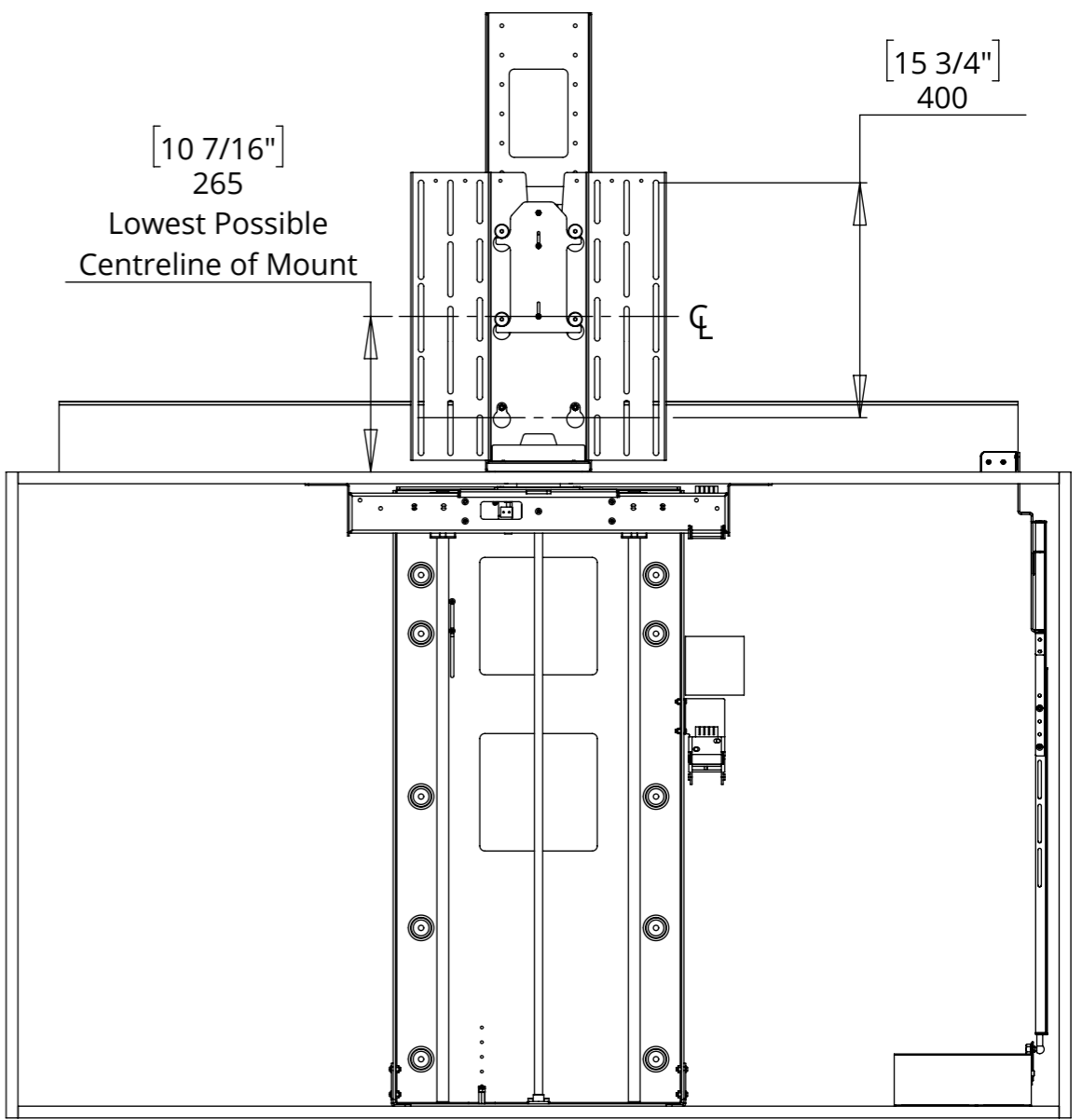
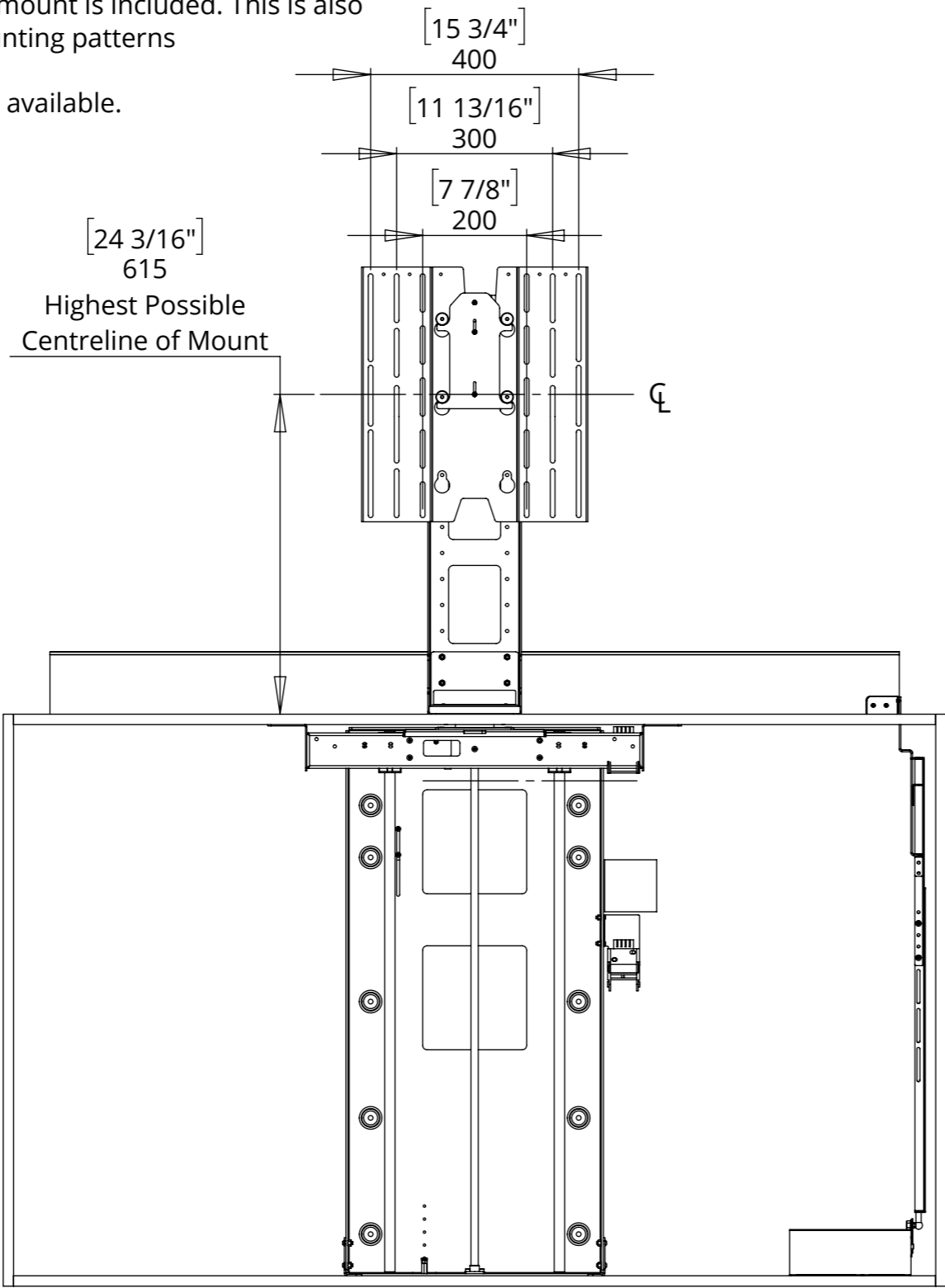
V400



V300



V200

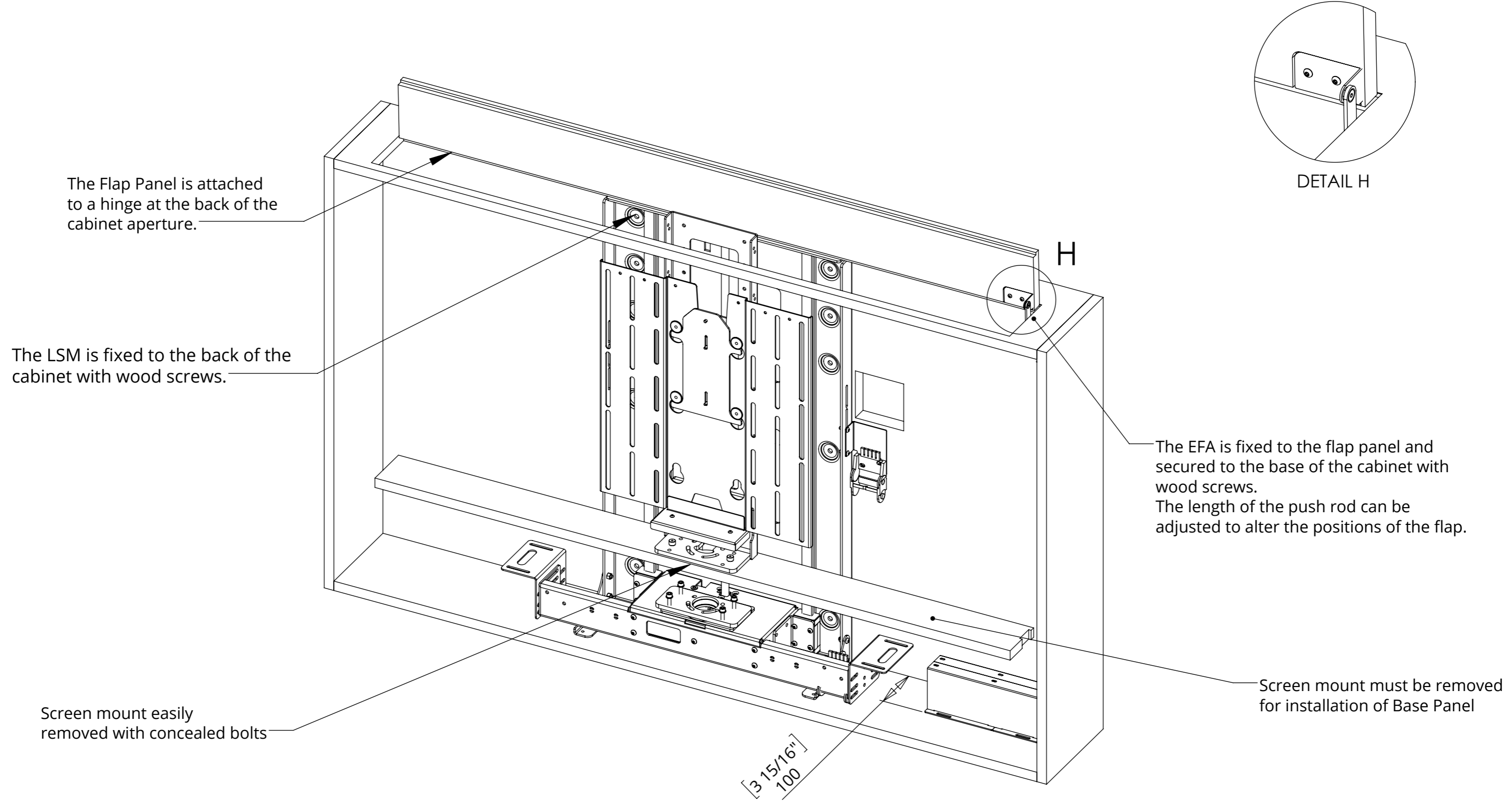


LSM-EFA-7

LIFT SYSTEM MEDIUM WITH ELECTRIC FLAP



MECHANISM INSTALLATION OVERVIEW



LSM-EFA-7

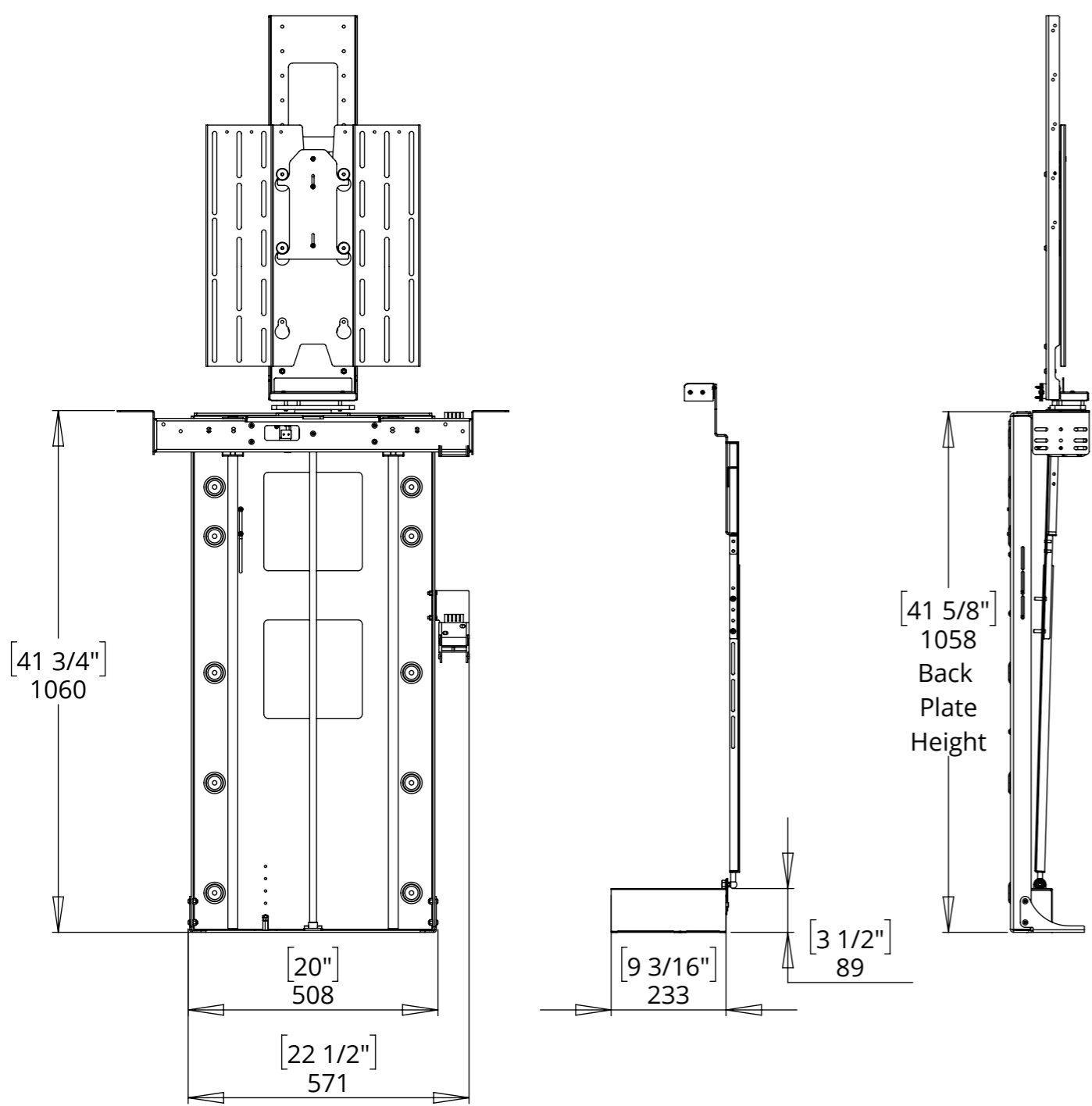
LIFT SYSTEM MEDIUM WITH ELECTRIC FLAP



future automation

OVERALL MECHANISM DIMENSIONS

MECHANISM - UP POSITION



MECHANISM - DOWN POSITION

