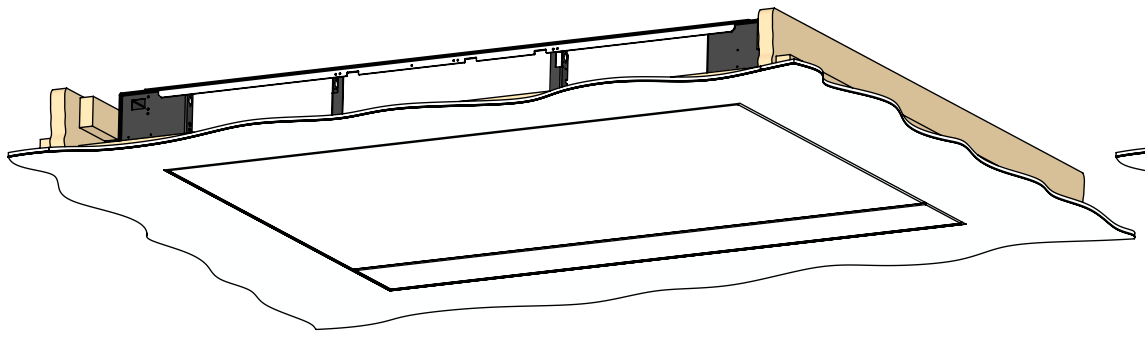
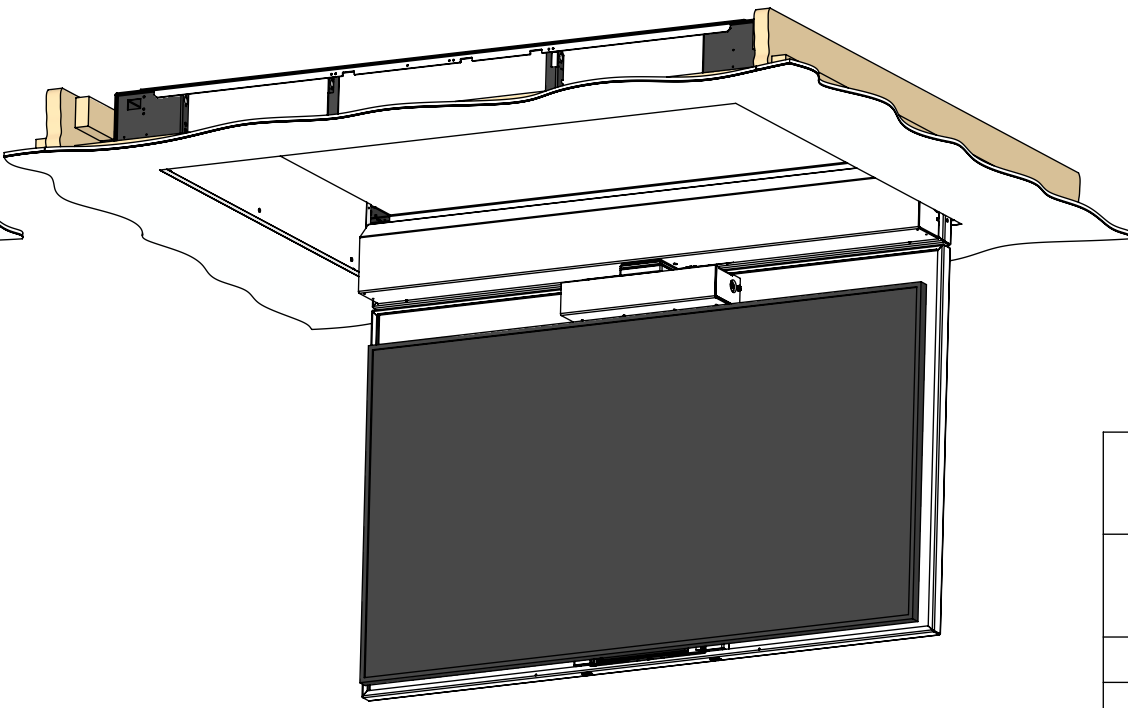


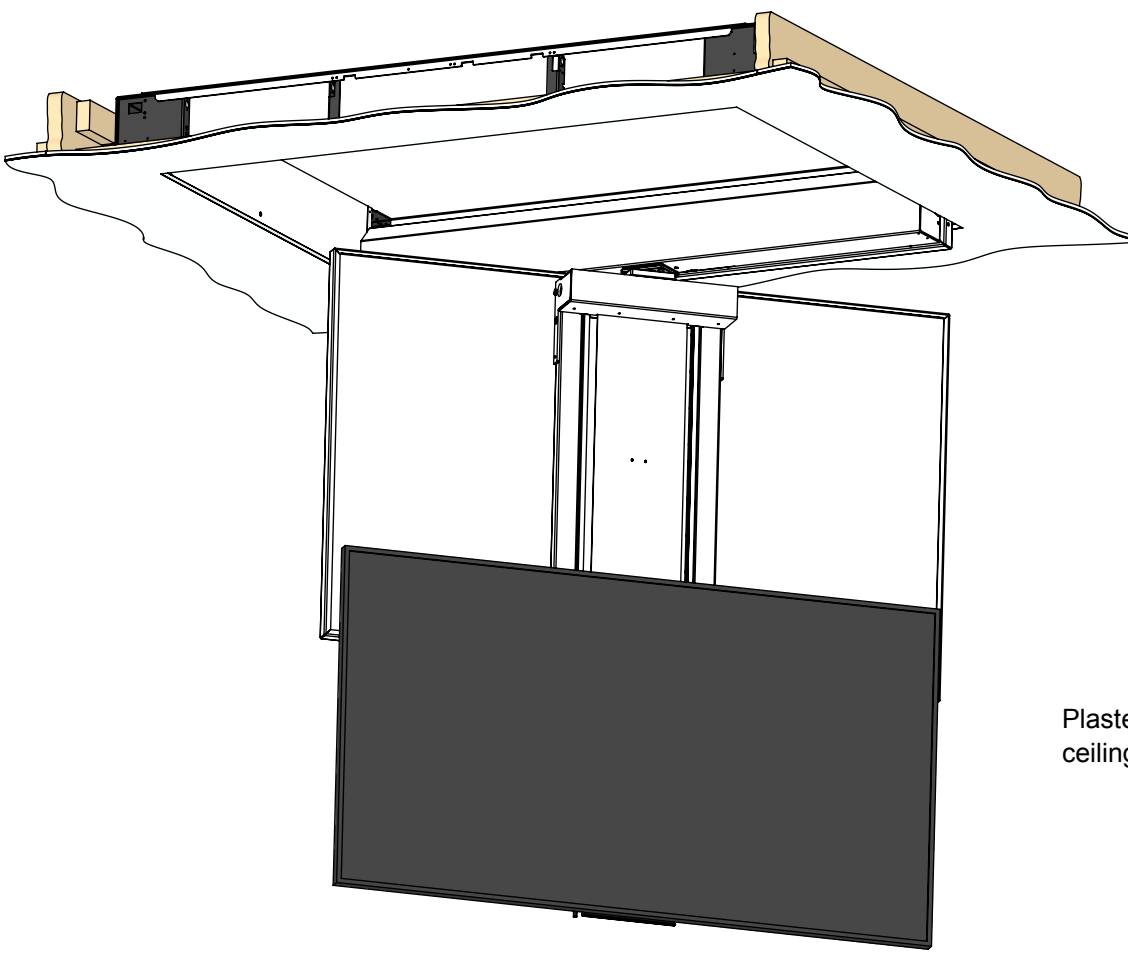
IN



OUT



OUT, SWIVELLED  
AND TELESCOPED



A motorised mechanism to reveal a display from the ceiling. This version hinges down by 90 degrees, telescopes the display further down from the ceiling and then swivels up to 180 degrees in both directions.

The size reference for this version is **CHRST8-RES**.

The mechanism is fixed in place before the ceiling is finished. Supplied with MDF plaster edging to neatly plaster into ceiling.

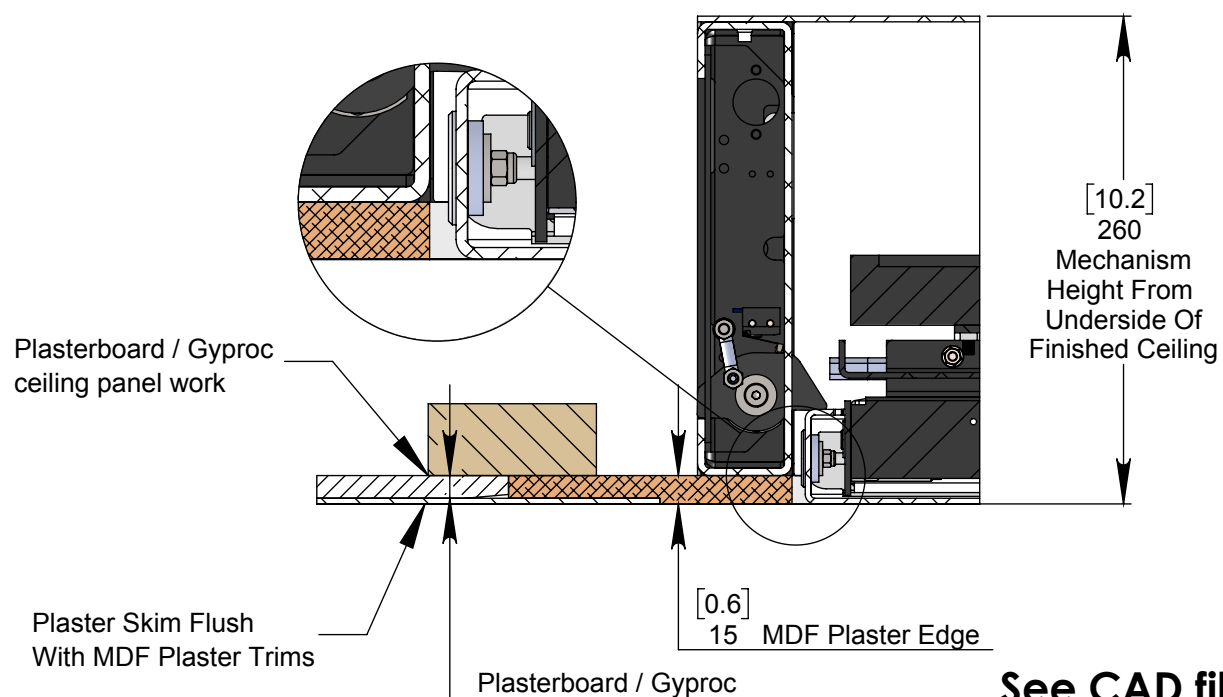
The control system can be operated via infra-red, RS232 or contact closure inputs.

Speakers can be added with the use of standard speaker mount brackets. (If required please specify during ordering process.)

See overview technical sheet for details on other products in the range.

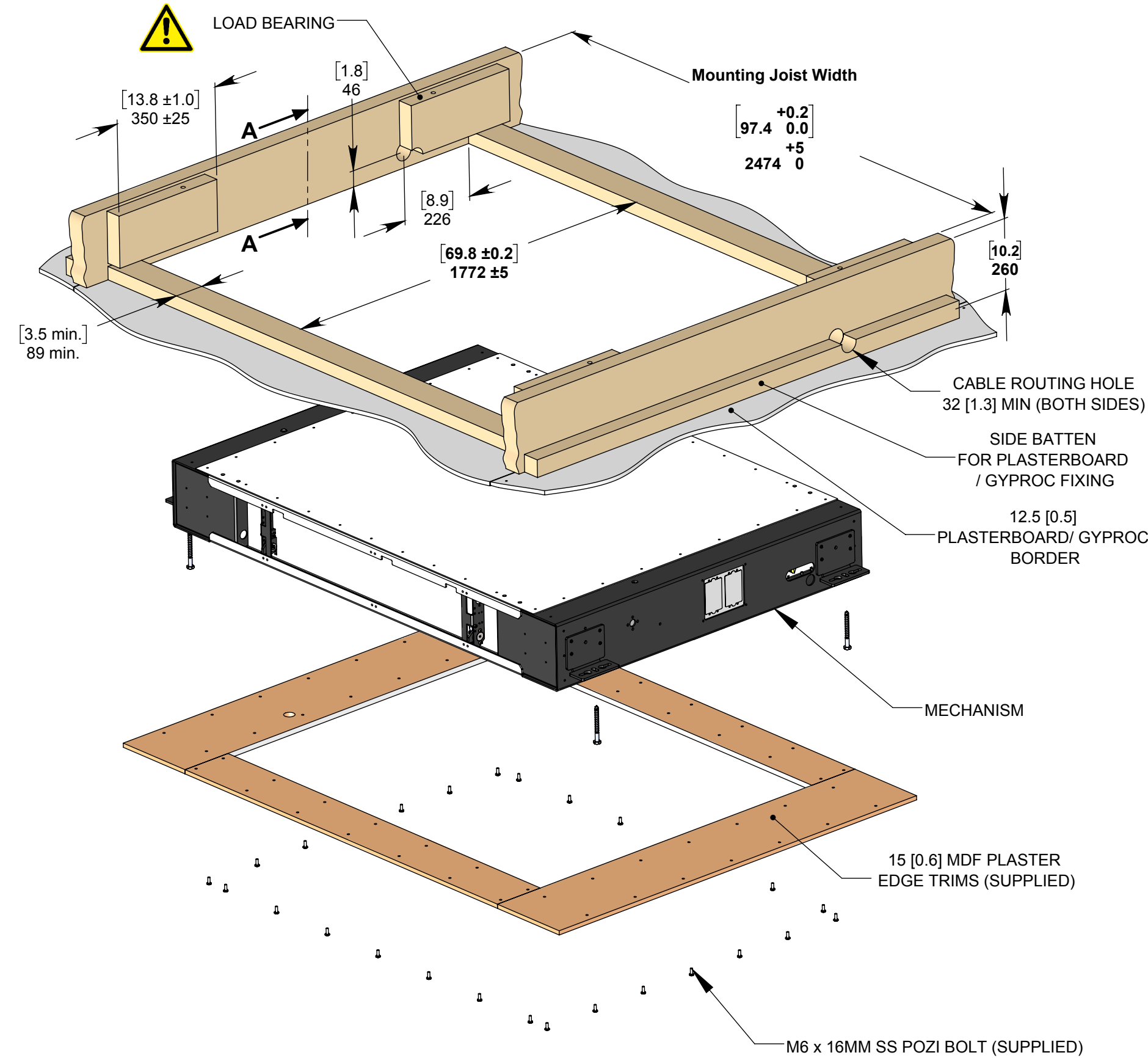
Model Code	CHRST8-RES
Max Screen Size	1980mm [78.0] x 1110mm [43.7.7] x 150mm [5.9]
Max Screen Weight	170kg [374lbs]
Approx Mechanism Weight	225kg [495lbs]
Environment	Residential
Colour	WHITE - RAL9910 Satin Finish
Control System	Accessible by internal access hatch
Ceiling Void Required For Fitting	2474 [97.4] W x 1665 [65.6] L x 260 [10.2] D

RESIDENTIAL MDF PLASTER EDGE

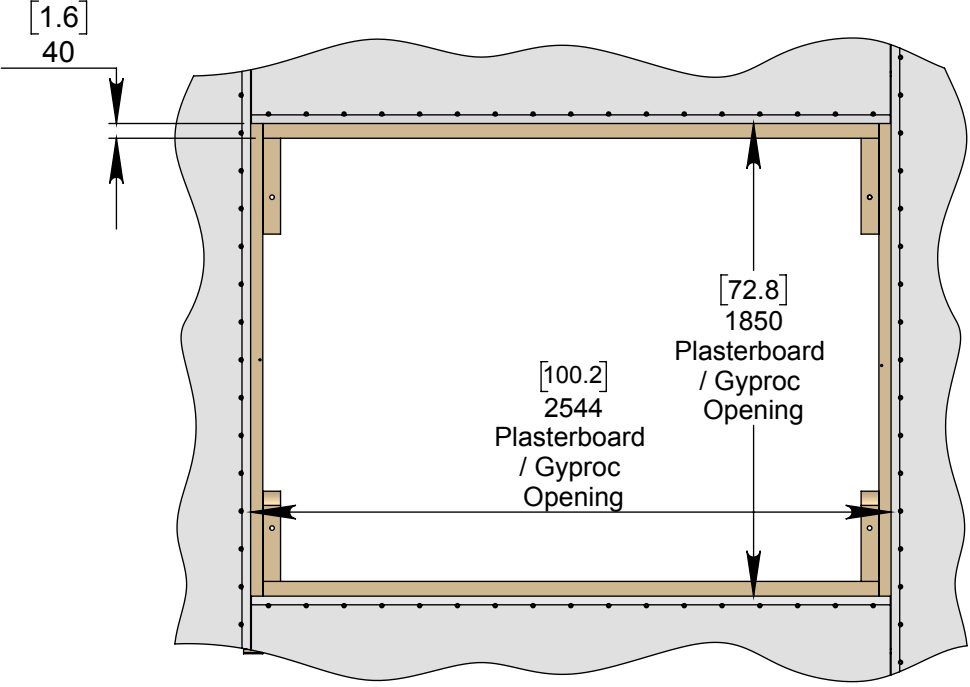


NOTE: This mechanism is not designed to accomodate aditional panelwork on the main hinging tray. Please see **Tech Note - CHR-RES-AP Addon Panel Technical Note** for more information.

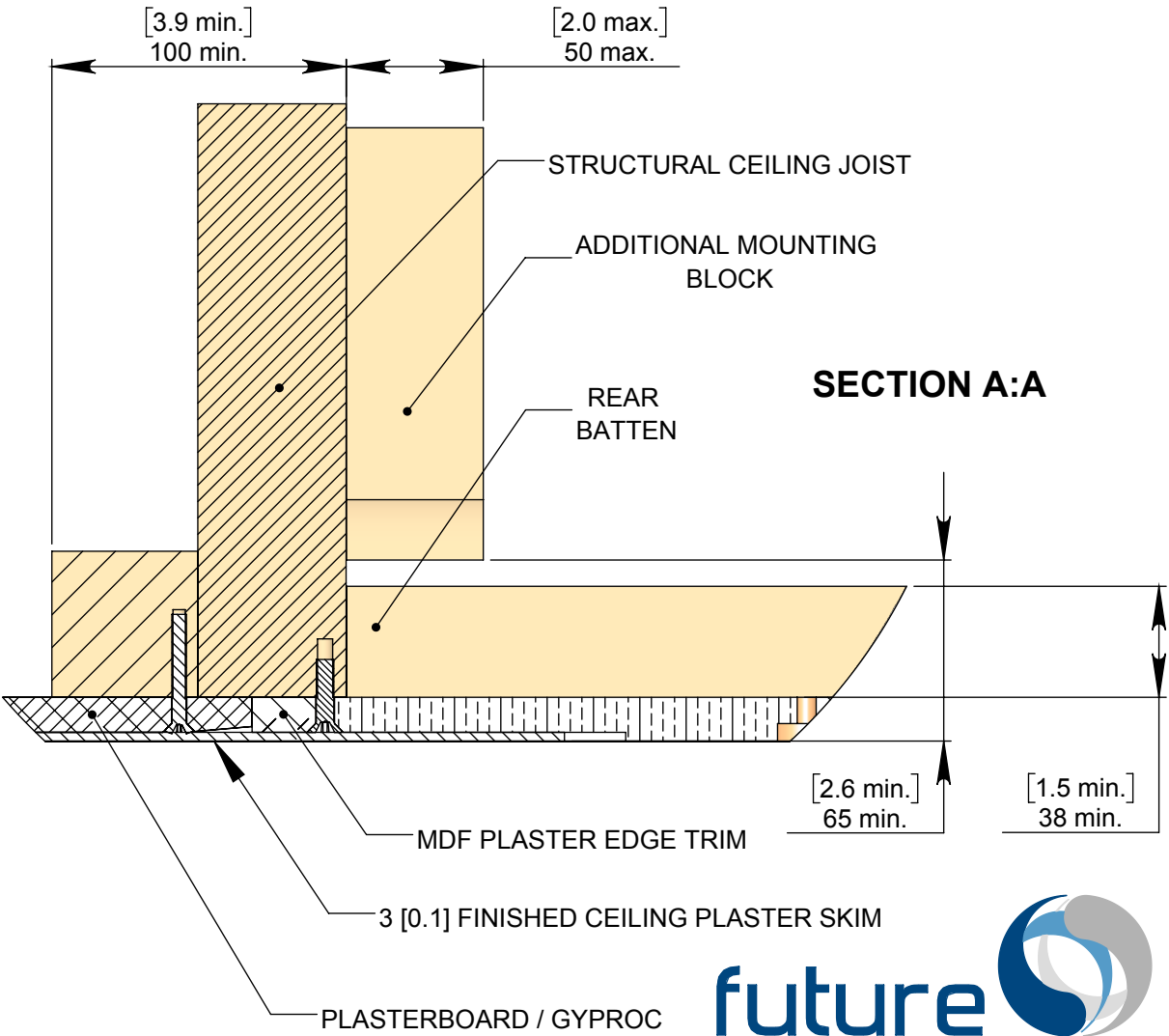
## OPTION 1 - FIXING TO WOODEN BEAMS



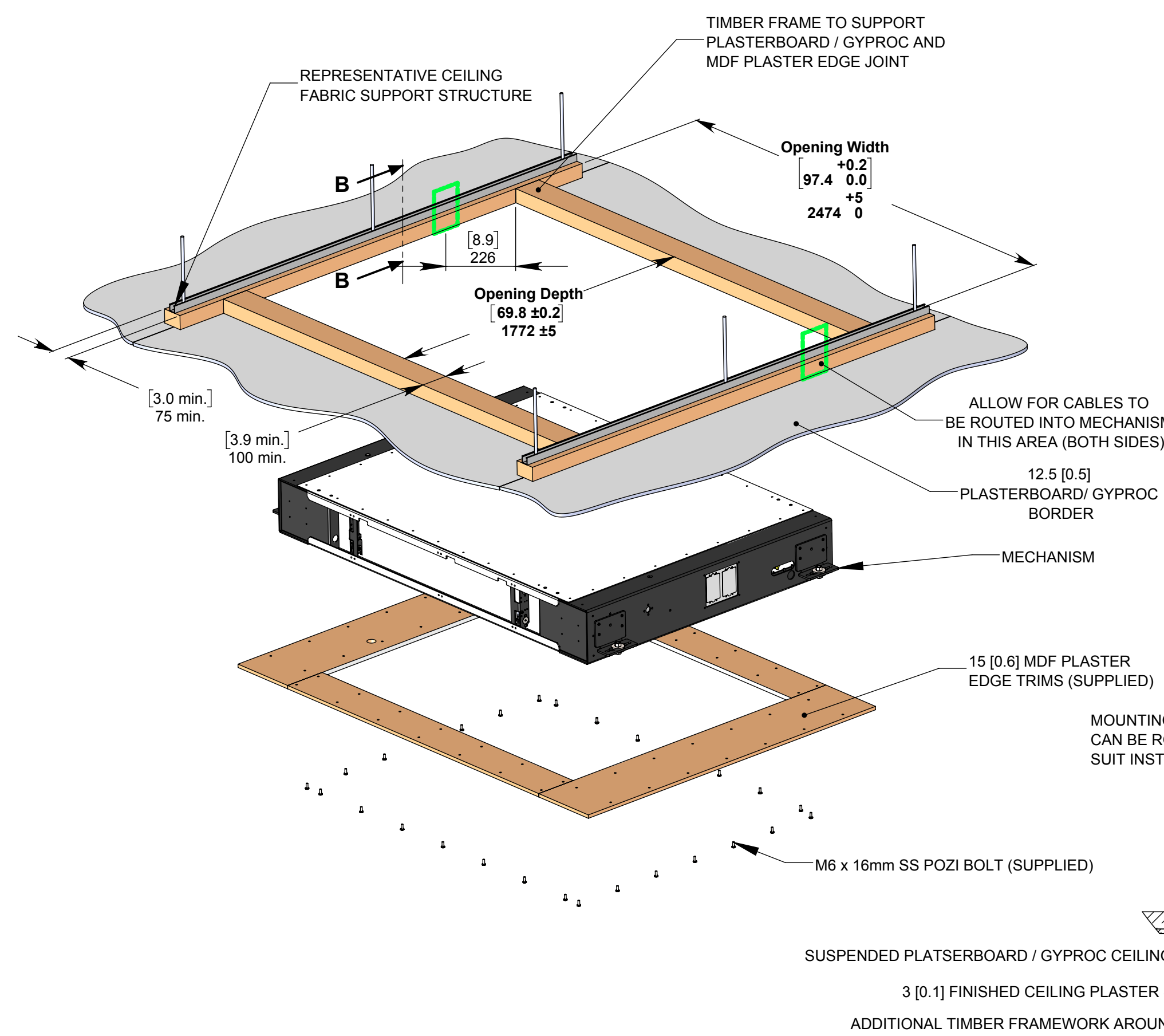
## VIEW FROM BELOW



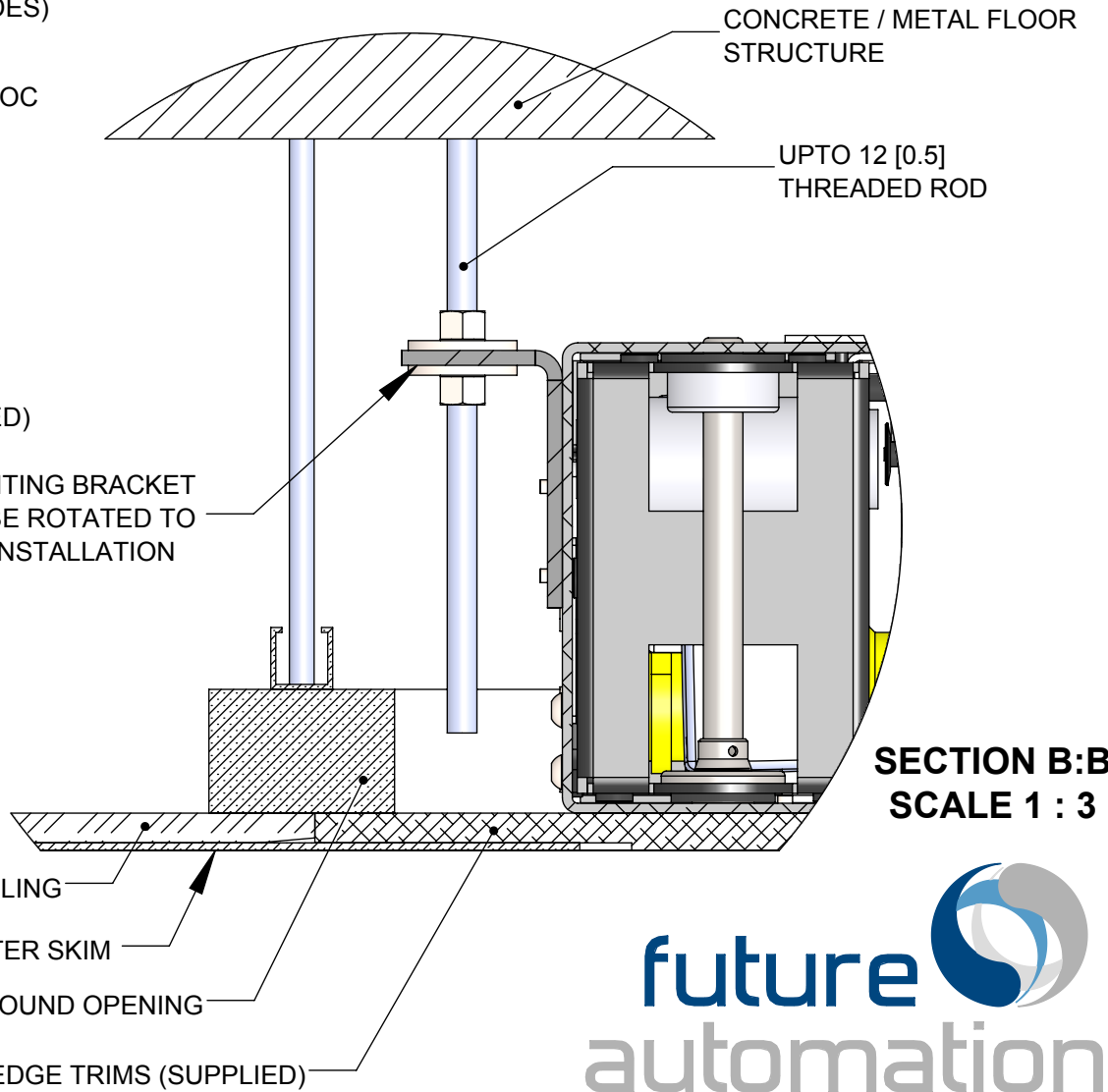
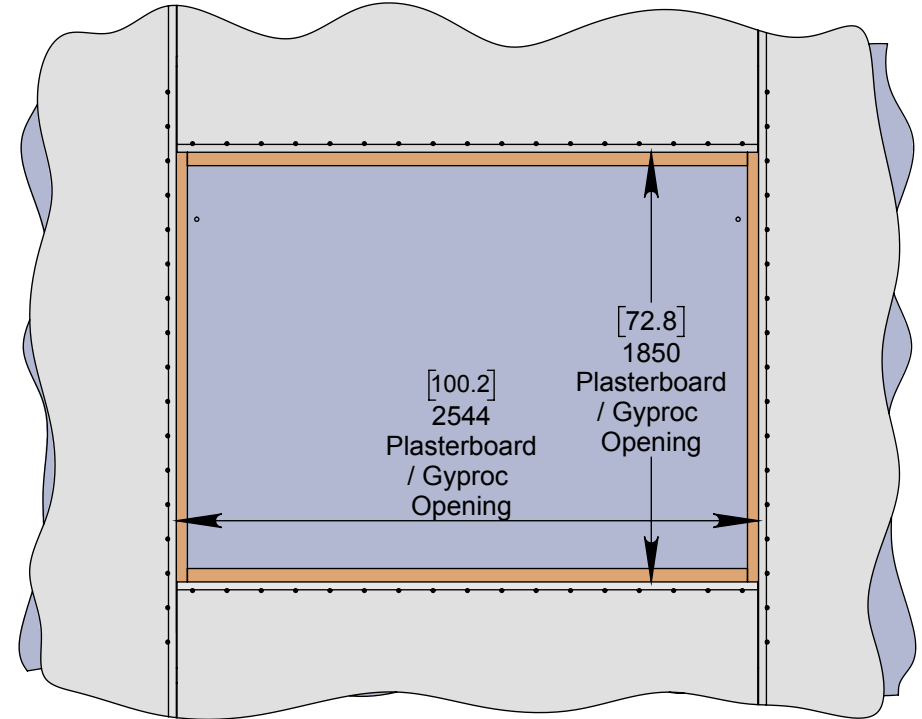
## SECTION A:A



OPTION 2 - SUSPENDING FROM CEILING STRUCTURE ABOVE



VIEW FROM BELOW



INSTALLATION PROCEDURE

1

Mechanism Installation

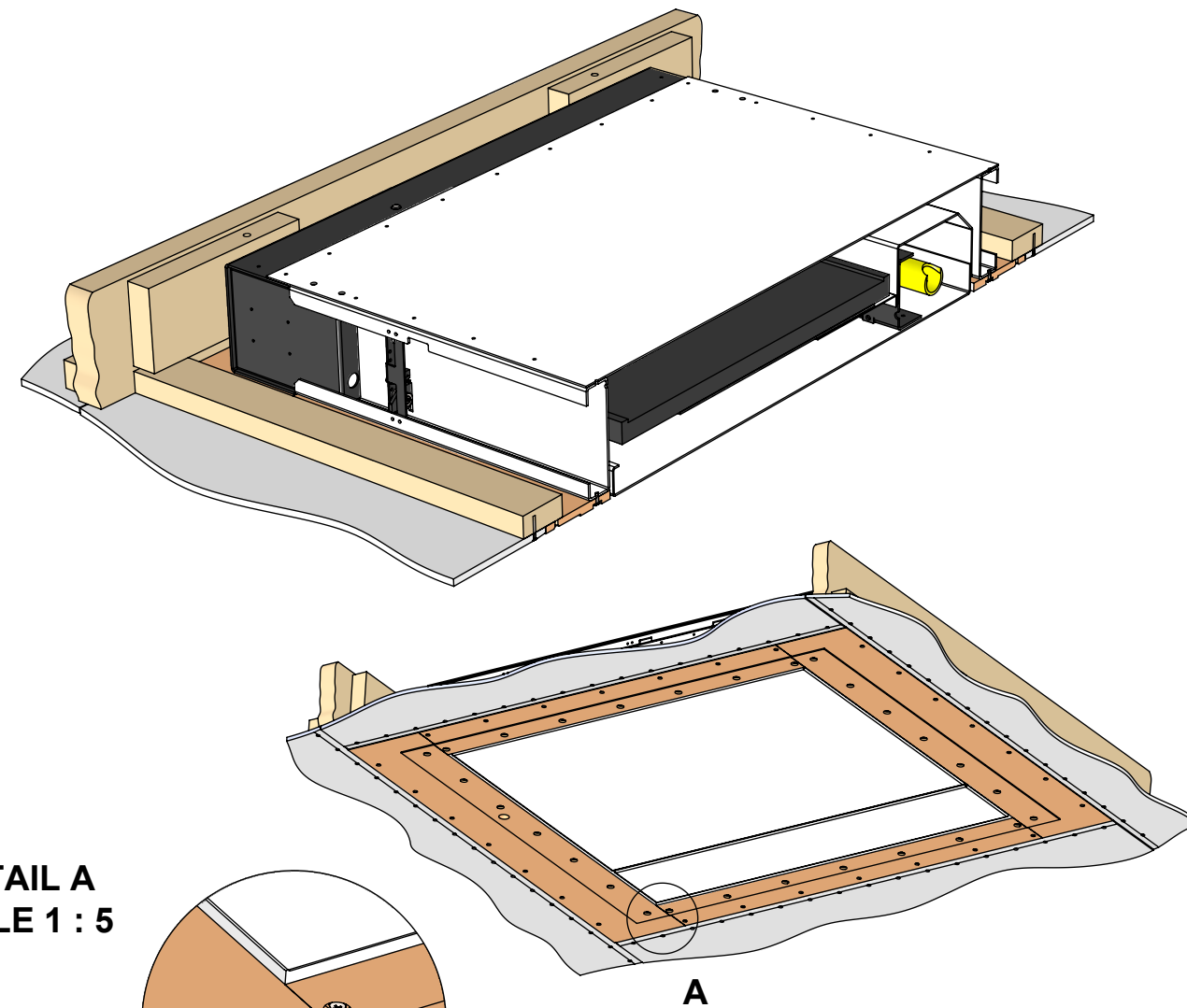
THE INSTALLATION PROCEDURE IS CARRIED OUT IN THE SAME WAY FOR OPTION 1 OR OPTION 2

2

MDF Plaster Trim Installation

3

Plastering



DETAIL A  
SCALE 1 : 5

28 No. OFF  
SS M6 x 16MM  
POZI (SUPPLIED)

28 No.OFF  
MDF SCREW  
(NOT SUPPLIED)

SUITABLE FIXING  
(NOT SUPPLIED)

DETAIL B  
SCALE 1 : 5

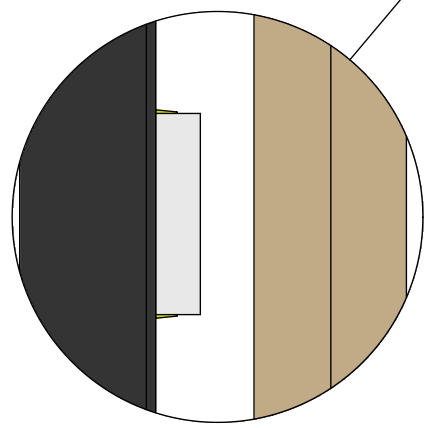
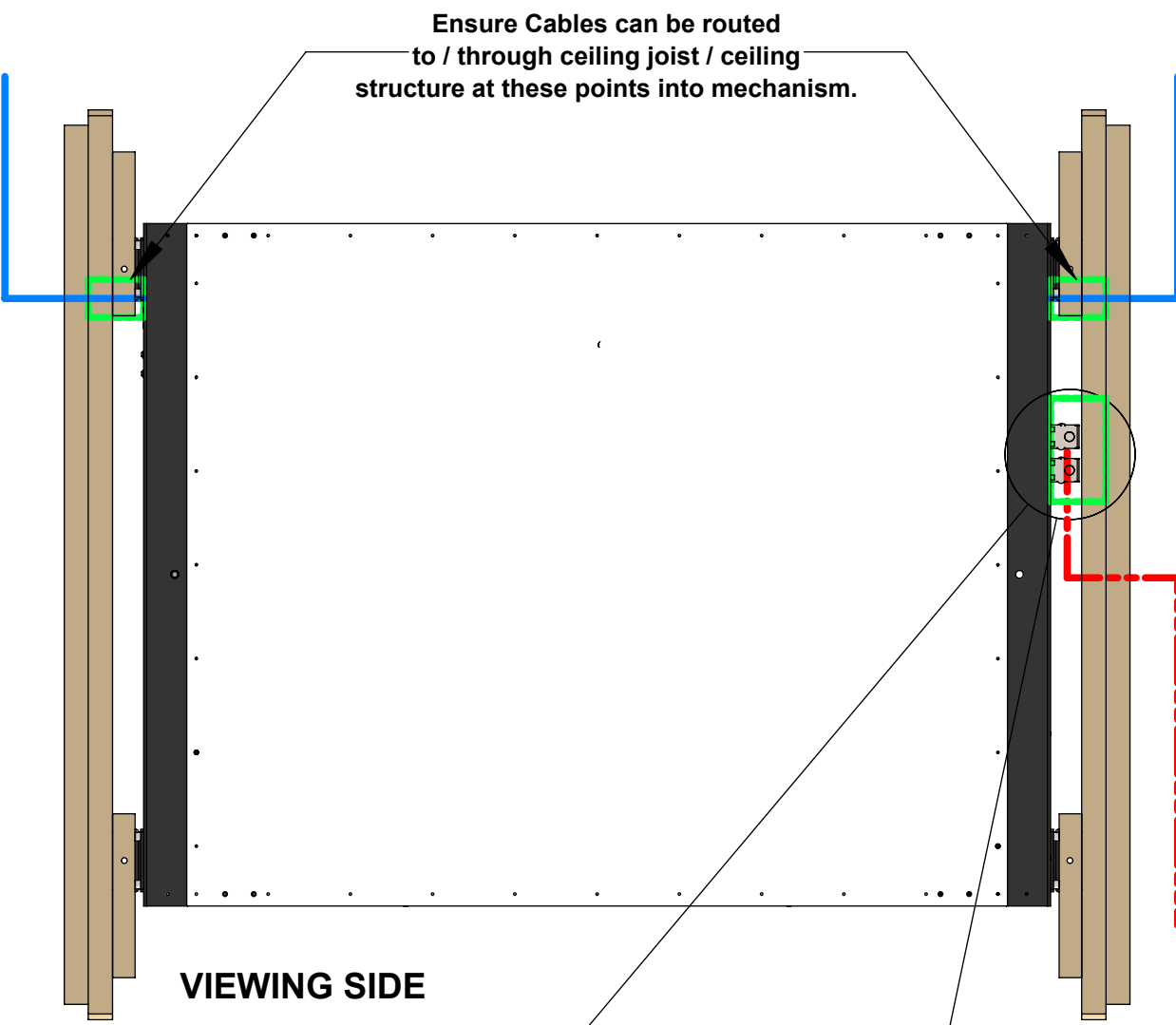
3 [0.1]  
FINISHED  
CEILING PLASTER  
SKIM

FINISHED CEILING

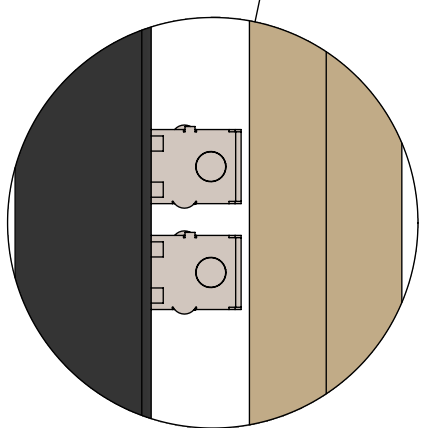
[8.6]  
218



CEILING PREPERATION



UK 2G Mains  
Plasterboard  
Back Box



2 No.  
US J-Box

- AV Signal Cables / Mechanism Control Cables
- - - Power Cable for Mechanism and AV

Cable Routing

Cables for the screen can be routed in from both sides, allowing for power and signal cables to be separated when entering the mechanism.

The opening on both sides is **MIN. 32mm [1.3"]** in diameter allowing for multiple cables to be routed to the screen.

A power outlet mounting plate is supplied in the right hand gearbox allowing for UK and US power outlets to be wired directly into the mechanism.

